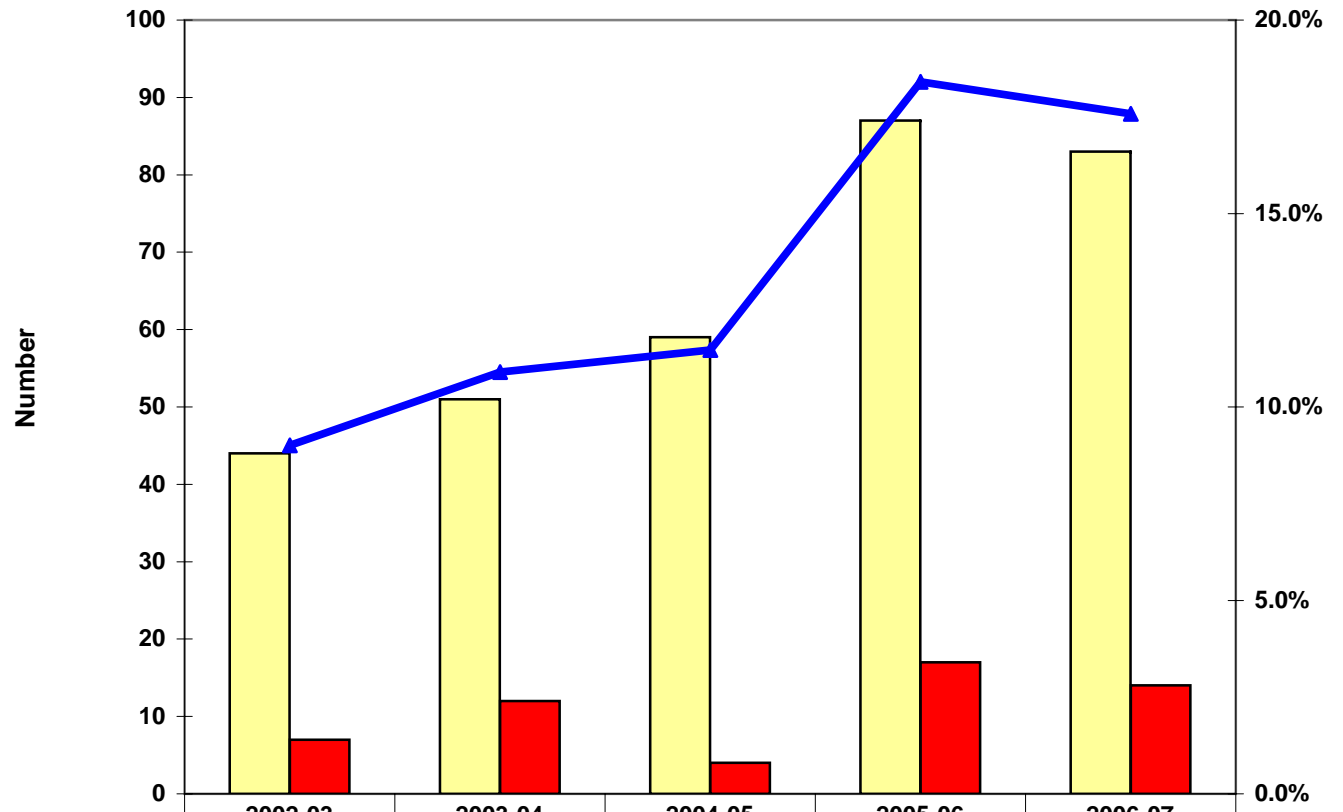


**ALANA and International First-Year Students, 2002-2006**  
(no transfer or exchange students included)



Total ALANA in First-Year Class (left axis)	44	51	59	87	83
Total International in First-Year Class (left axis)	7	12	4	17	14
ALANA and International as % of First-Year Class (right axis)	9.0%	10.9%	11.5%	18.4%	17.6%